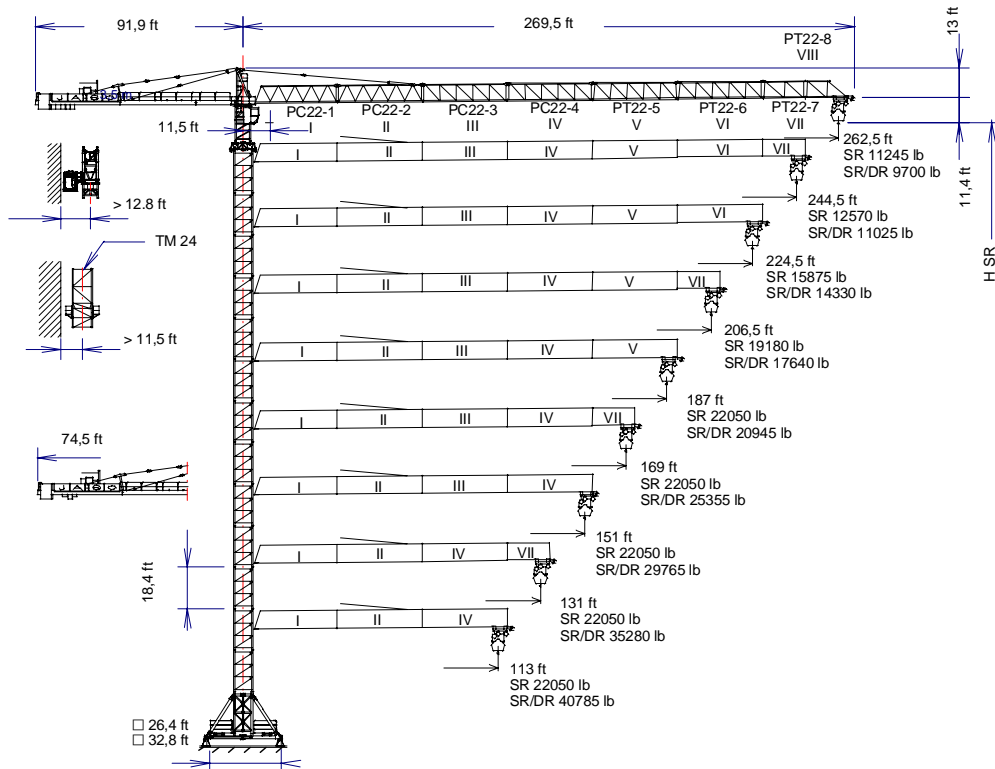
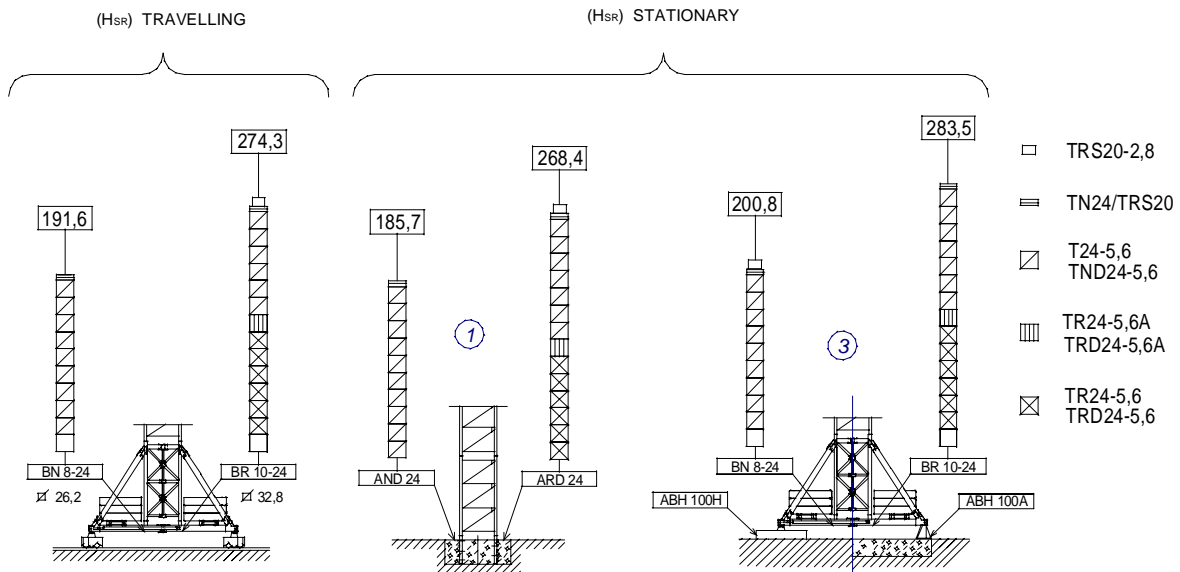


UNE 58-101-92
FEM 1001

QUALITY ASSURANCE SYSTEM CERTIFIED ACCORDING TO
UNE-EN-ISO 9001



Hdr= Hsr-3 ft Hsr= Maximum height under hook without fastening (ft)	PC22-1	156.40.000	TRS20-2,8	156.32.700
	PC22-2	156.41.000	TR24-5,6A	156.32.900
	PC22-3	156.42.000	TN24-5,6	156.32.300
	PC22-4	156.43.000	TR24-5,6	156.30.700
	PT22-5	156.44.000	TRD24-5,6A	156.31.900
	PT22-6	156.45.000	TND24-5,6	156.31.800
	PT22-7	156.46.000	TRD24-5,6	156.30.300
	PT22-8	156.47.000	TN24/TRS20	156.36.500
	TM 24	156.35.000	BR 10-24	156.20.500
	ARD 24	156.21.000	ABH 100A	156.23.000
			ABH 100H	156.23.500



JIB	SR (lb)					Maximum loads SR-22050						22050 lb at ... (ft)
	Hook reach (ft)											
	262,5	244,5	224,5	206,5	187	169	151	131	113	98,5	82	
262,5 ft	11245	12315	13660	15125	17045	19195	21860	22050	22050	22050	22050	149,6
244,5 ft	—	12570	13945	14775	17385	19570	22050	22050	22050	22050	22050	152,2
224,5 ft	—	—	15875	17540	19710	22050	22050	22050	22050	22050	22050	169,6
206,5 ft	—	—	—	19180	21530	22050	22050	22050	22050	22050	22050	183,1
187 ft	—	—	—	—	22050	22050	22050	22050	22050	22050	22050	187
169 ft	—	—	—	—	—	22050	22050	22050	22050	22050	22050	169
151 ft	—	—	—	—	—	—	22050	22050	22050	22050	22050	151
131 ft	—	—	—	—	—	—	—	22050	22050	22050	22050	131
113 ft	—	—	—	—	—	—	—	—	22050	22050	22050	113

JIB	SR / DR (lb)					Maximum loads SR/DR- 22050-44100						22050 44100 lb at ... (ft)
	Hook reach (ft)											
	262,5	244,5	224,5	206,5	187	169	151	131	113	98,5	82	
262,5 ft	9700	10780	12150	13625	15565	17740	20440	22050	22050	22050	22050	141,7
								24220	28850	33900	41645	77,8
244,5 ft	—	11025	12415	13925	15895	18100	20845	22050	22050	22050	22050	144
								24695	29390	34525	42395	79,4
224,5 ft	—	—	14330	16005	18200	20660	22050	22050	22050	22050	22050	160,1
								23700	27980	33205	38915	87,9
206,5 ft	—	—	—	17640	20010	22050	22050	22050	22050	22050	22050	172,9
						22655	25940	30560	36190	42340	44100	94,8
187 ft	—	—	—	—	20945	22050	22050	22050	22050	22050	22050	179,5
						23700	27110	31900	37755	44100	44100	98,4
169 ft	—	—	—	—	—	22050	22050	22050	22050	22050	22050	169
						25355	28970	34030	40225	44100	44100	104,3
151 ft	—	—	—	—	—	—	22050	22050	22050	22050	22050	151
							29765	34955	41295	44100	44100	106,6
131 ft	—	—	—	—	—	—	—	22050	22050	22050	22050	131
								35280	41670	44100	44100	107,6
113 ft	—	—	—	—	—	—	—	—	22050	22050	22050	113
									40785	44100	44100	105,6

MECHANISMS FEATURES

Mechanisms without VF: For 480V 60Hz Powers and speeds: 20% more

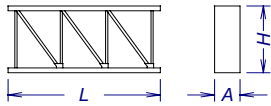
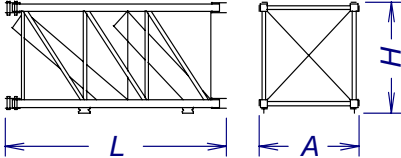
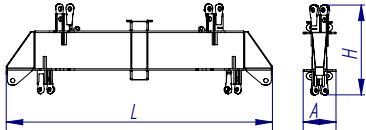
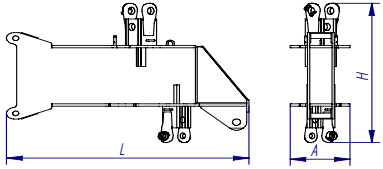
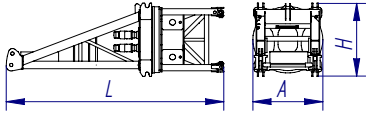
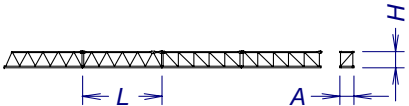
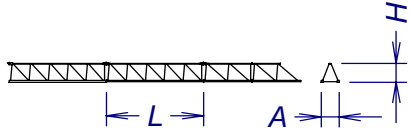
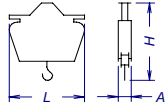
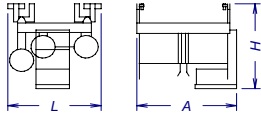
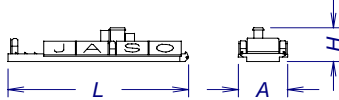
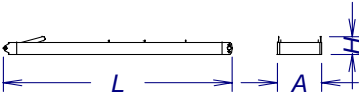
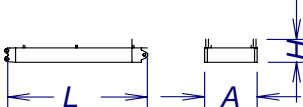
*optional						
	EC88130VF	*EC150215VF	TG4020VF	OG4006VF	TC1290VF	TH2506
	<p>22050 lb ---- 0...112 ft/min</p> <p>3750 lb ---- 0...427 ft/min.</p>	<p>44100 lb ---- 0...184 ft/min</p> <p>3750 lb ---- 0...705 ft/min.</p>				
	<p>44100 lb ---- 0...56 lb/min</p> <p>7500 lb ---- 0...213 lb/min</p>	<p>44100 lb ---- 0...92 ft/min</p> <p>7500 lb ---- 0...351 ft/min.</p>	0...66 ft/min	0...0,1 0,1...0,3 0,3...0,6 r/min s/min	22050 lb 0...294 ft/min	2
kW	65	110	4 x 7,5	4 x 7,5	8,8	18,4
Maximum hook course	<p>SR 774 ft 3 layers 1352 ft 5 layers max.</p> <p>DR 387 ft 3 layers 676 ft 5 layers max</p>		400V 50Hz Power required with ... EC 88130VF = 133,8 kW EC150215VF = 178,8 kW			

Important: When the height under hook increases, the hoisting load will decrease. If the height under hook is higher than the free standing height, consult to JASO EQUIPOS DE OBRAS Y CNES, S.L.

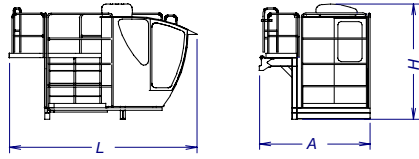
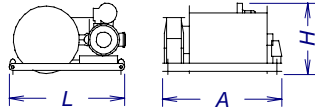
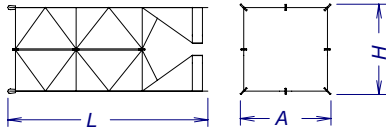
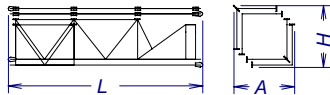


JASO EQUIPOS DE OBRAS Y CONSTRUCCIONES, S.L.

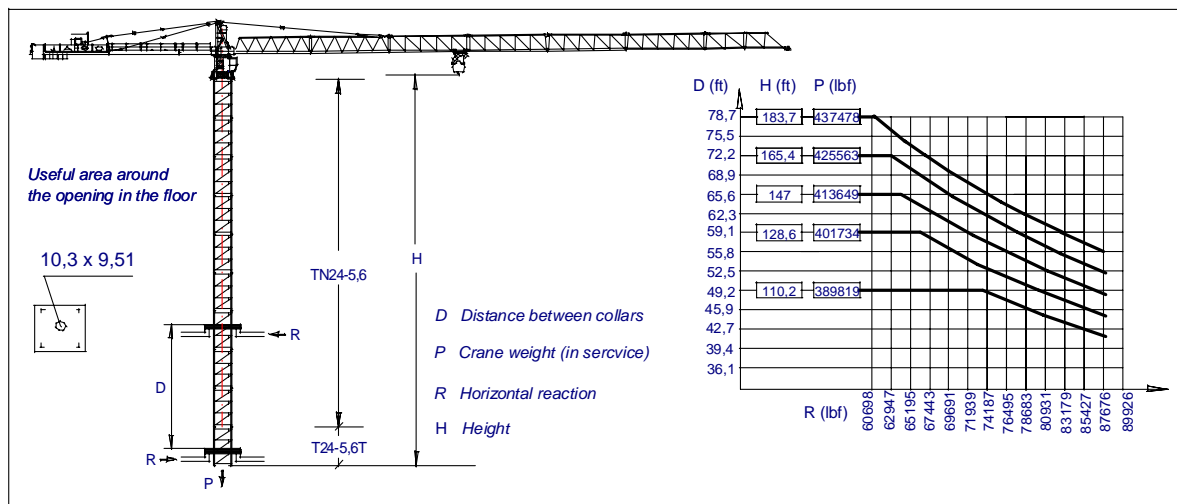
Date: 28-03-07 - Subject to modification, without previous warning
This information is supplied without liability

DENOMINATION			L (ft)	A (ft)	H (ft)	W (lb)
Dismantled tower	TND24-5,6		19,6		9,3	3376
	TRD24-5,6		19,7		9,3	3745
	TRD24-5,6A		19,6		9,3	3691
Assembled tower	TND24-5,6		19,6	9	9,3	15758
	TRS20-2,8		10,5	7,4	7,4	7809
	TRD24-5,6		19,7	9,1	9,3	17257
	TRD24-5,6A		19,6	9	9,3	16831
Long crossbar	TN24/TRS20		15,9	2	5,7	8153
Short crossbar	TN24/TRS20		7,8	1,9	5,7	3823
Slewing table assembly, tower head and slewing mechanism			7,2	2,3	2,5	32342
Jib section	PC22-1 (I)		38,2	7,3	8,2	11224
	PC22-2 (II)		38,5	7,3	8,1	12648
	PC22-3 (III)		38,5	6,8	8,1	13045
	PC22-4 (IV)		38,5	6,8	8,1	11310
Jib section	PT22-5 (V)		38,5	6,8	8,1	6426
	PT22-6 (VI)		38,5	6,8	8,1	4372
	PT22-7 (VII)		19,4	6,8	8	2421
	PT22-8 (VIII)		19,2	6,8	8,1	1497
Hook assembly	SR		5,1	1,4	4,3	997
	DR		6,1	1,4	6,8	2196
Crab	SR		8,3	8,1	7,3	2114
	DR		8,6	8,1	7,3	2613
Counterjib with platforms			37,8	11,2	7,6	20172
Large counterjib extension with platforms			34	6,6	2,9	8907
Counterjib extension with platforms.			18	6,63	3,1	5379



DENOMINATION		L (ft)	A (ft)	H (ft)	W (lb)
Platform and cabin		14,2	8,4	8,9	2976,2
Support and hoisting		8,2	6,9	4,1	7330,4
Assembled jacking cage		37,5	12,3	11,9	26675,9
Dismantled jacking cage		38,4	7,7	8,4	26675,9

LOWER BALLASTS		For intermediate heights take the ballast corresponding to the higher height	
BR 10-24	Height under hook (ft)	191,6	283,5
Number of ballast blocks to put	Blocks of 13230 lb	8	12
BN 8-24	Height under hook (ft)	136,5	191,6
Number of ballast blocks to put	Blocks of 13230 lb	12	16



JASO EQUIPOS DE OBRAS Y CONSTRUCCIONES, S.L.

Rd. Madrid - Irún Km. 415
 20.213 IDIAZABAL (Gipuzkoa)
 SPAIN
 P.O. Box, 23 - 20.200 BEASAIN

Tel. +34 943 - 18 70 00 Fax. +34 943 - 18 70
 20E-mail: jaso@jaso.com http://www.jaso.com

Date: 28-03-07

Subject to modification, without previous warning
 This information is supplied without liability

