



STUMP GRINDER

AUSTRALIA'S PREMIER ATTACHMENT MANUFACTURER

Stump Grinder

Disintegrate tree stumps into wood chips quickly with the Digga Stump Grinder. Carbide tipped teeth and fingertip controls has been designed into the unit to allow the operator to adjust the speed of swing and lift functions to accommodate the machine & operators maximum performance

Features:

- Operation is controlled from inside the operators compartment with a multi function control
- An adjustable speed control has been designed into the unit to allow the operator to adjust the speed of swing and lift functions to accommodate the machine & operators maximum performance
- Tooth pattern allows side to side and vertical cuts
- Grinds stumps up to 255mm below ground
- 60 range of motion covers 1100mm in a single sweep
- Easy access to all drive components for maintenance

Ideal Use:

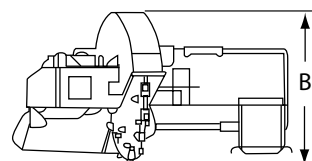
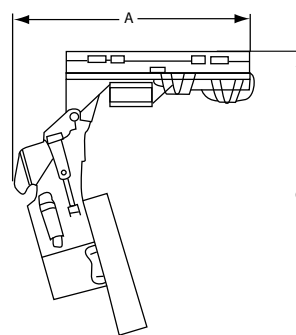
Land Clearing, Stump Grinding

Machine Suitability:

Skid steer loaders



Mini Stump Grinder also available



Specification:	
Weight:	326Kg
Length (C)	1854mm
Height (B)	940mm
Width (A)	1473mm
Below ground depth	255mm
Number cutting teeth	28
Wheel diameter	660mm
Hydraulic Flow required	60-80 lpm

DIGGA Head Office

Brisbane QLD
4 Octal Street,
Yatala QLD 4207
Ph: (07) 3807 3330
Fax: (07) 3807 1499

DIGGA NSW

1 Gallipoli St, Smeaton
Grange, NSW, 2567
Ph: (02) 4647 1400
Fax: (02) 4647 1433

DIGGA VIC

21 - 25 Villas Road,
Dandenong VIC, 3175
Ph: (03) 9706 6171
Fax: (03) 9706 6164

DIGGA WEST

13 Yampi Way,
Willetton, WA, 6155
Ph: (08) 9457 1544
Fax: (08) 9457 0748

Email: info@digga.com **Web:** www.digga.com

